



2026

# Equipment Stocklist

## MAY – JUNE

Stock contained in this brochure are subject to availability. Coleman's Equipment uses best efforts to keep the brochure up to date, however in some circumstances the Stock may have sold. prior to update being completed. Please call to get the latest information.

**CE** COLEMAN'S  
EQUIPMENT



# Bulldozers

+61 (02) 6362 1101

| [cequip.com.au](http://cequip.com.au)

| [sales@cequip.com.au](mailto:sales@cequip.com.au)

# Caterpillar D6N XL

Dozer

Make

Caterpillar

Model

D6N XL

Year

2013

Hours

4,565



POA

- EROPS
- A/C Cabin
- PAT Blade
- Multi Shank Ripper
- 3 x Tynes
- E-Stops
- Battery Isolator
- UHF Radio
- AM/FM Radio
- LED Flashing Light
- Workshop Checked
- DPF Delete Completed
- Plug & Play Accugrade GPS Ready
- **Located in Orange, NSW**

# Caterpillar D6T XL

Dozers

Make

Caterpillar

Model

D6T XL

Year

2016

Hours

12,236



POA

- Stock ID: CE2194
- EROPS
- A/C Cabin
- SU Blade
- Multi Shank Ripper
- 3 x Tynes
- Fast Fill Fuel
- Reverse Camera
- UHF Radio
- AM/FM Radio
- LED Flashing Light
- Workshop Checked & Serviced
- **Will be Fitted with New CAT Undercarriage**
- Trimble 3D System – Blade Mounted Available as an Extra
- **Located in Orange NSW**

# Caterpillar D6 NG

Dozers

Make

Caterpillar

Model

D6 NG

Year

2024

Hours

1,000



POA

- Stock ID: CE2191
- EROPS
- A/C Cabin
- SU Blade
- Multi Shank Ripper
- Reverse Camera
- Lockable Battery Isolator
- 2 x E-Stops
- Plug & Play wired for Trimble 3D GPS Blade Mounted "Earthworks"
- 3D GPS System Available – Operator Kit (at extra cost)
- GME UHF Radio
- CAT AM/FM Radio & Speakers
- LED Flashing Light
- Workshop Checked & Serviced
- **Located in Orange NSW**

# Caterpillar D6 LGP

Dozer

Make

Caterpillar

Model

D6 LGP

Year

2024

Hours

1,000



POA

- Stock ID: CE2205
- EROPS
- A/C Cabin
- Straight Blade with Tilt
- Ripper Valve
- Multi Shank Ripper Available
- Reverse Camera
- Battery Isolator
- E-Stops
- Trimble 3D Earthworks GPS available as an extra
- GME UHF Radio
- CAT AM/FM Radio
- LED Flashing Light
- Workshop Checked & Serviced
- Sold New 2025
- **Available Early June**

# Caterpillar D7 NG

Dozer

Make

Caterpillar

Model

D7

Year

2024

Hours

9



SOLD

- Stock ID: CE2206
- EROPS
- A/C Cabin,
- SU Blade with Tilt
- 4 Barrel Multi Shank Ripper
- 3x Tynes
- Battery Isolator
- E-Stops
- GME UHF Radio
- AM/FM Radio
- **Available Soon**

# Caterpillar D8T

Dozer

Make

Caterpillar

Model

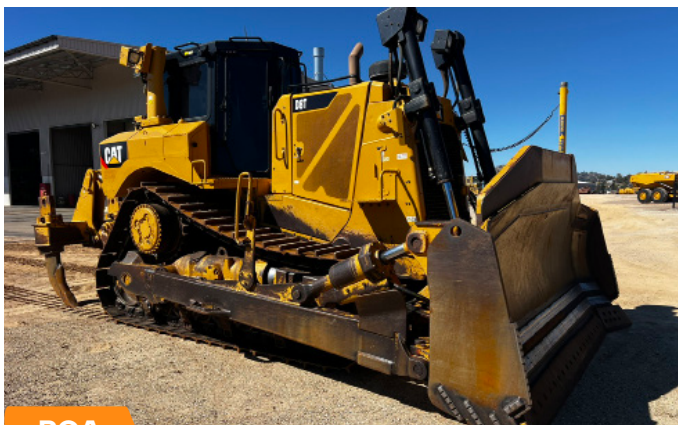
D8T

Year

2017

Hours

11,903



POA

- Stock ID: CE2193
- EROPS
- A/C Cabin
- SU Blade with Tilt
- 4 Barrel Multi Shank Ripper
- 3 x Tyne
- E-Stops
- Reverse Camera
- Cat FM/AM Radio
- GME UHF Radio & Speakers
- LED Flashing Light
- Will be Degreased & Washed
- Will be PM Serviced & Workshop Checked
- 3D Trimble GPS System Available as an extra
- **Located in Orange NSW**



**EXTENSIVE W/SHOP  
REBUILD IN PROGRESS**

# Caterpillar D9T

## Dozer

**Make**

**Caterpillar**

**Model**

**D9T**

**Year**

**2014**

**Hours**

**16,336**

**Stock ID**

**CE2167**

- EROPS
- A/C Cabin
- SU Blade with Dual Tilt
- 4 Barrel Multi Shank Ripper with 3 x Tynes
- Reverse Camera
- Auto Greaser
- Fire Suppression System

- Fast Fill for Fuel
- E-Stops
- Battery & Starter Isolators
- GME UHF Radio
- AM/FM Radio
- LED Flashing Light
- Service History Available
- Workshop Checked &

Serviced

- **Will be fitted with New CAT Reman Engine & Reman Transmission**
- Located in Orange, NSW



# Graders

# John Deere 770GP

## Grader

Make

John Deere

Model

770 GP

Year

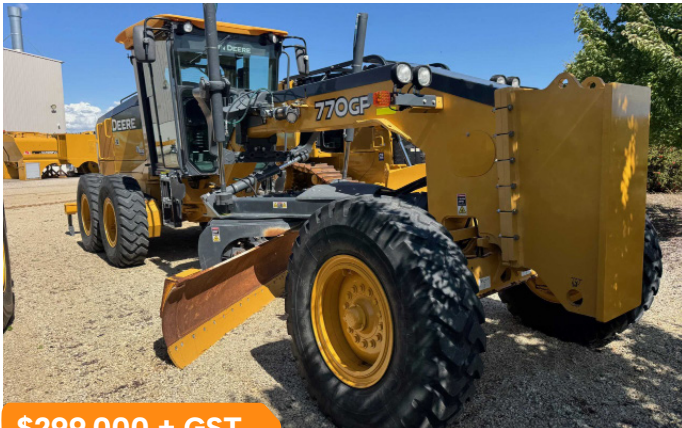
2017

Hours

4,924

Stock ID

CE2034



\$299,000 + GST

- EROPS
- A/C Cabin
- Push Block
- 14ft Blade
- MS Ripper
- Reverse Camera
- Battery Isolator
- GME UHF Radio
- AM/FM Radio
- LED Flashing Light
- 14.00 Tyres & Rims
- Workshop Checked & Serviced
- Service History
- **Located in Orange, NSW**

# Caterpillar 140M

## Graders – 2x Units

Make

Caterpillar

Model

140M

Year

2013

Hours

16,735

Stock ID

CE2099/2217



POA

- 2 x Units Available (Unit 1: 16,915 2012 Hours & Unit 2: 16,735 2013)
- EROPS
- A/C Cabin
- Push Block
- Blade
- Rear Rippers
- Reverse Camera
- Wired for Topcon GPS
- Jump Start Receptacle
- Lockable Battery Isolator
- E-Stops
- UHF Radio
- AM/FM Radio
- LED Flashing Light
- 17.5 Tyres & Rims
- Workshop Checked & Serviced
- Service History
- **Located in Orange, NSW**

**CE** COLEMAN'S  
EQUIPMENT



# Compactors

+61 (02) 6362 1101

| [cequip.com.au](http://cequip.com.au)

| [sales@cequip.com.au](mailto:sales@cequip.com.au)



**EXTENSIVE W/SHOP  
REBUILD IN PROGRESS**

# Caterpillar 815F II

## Compactor

**Make**

**Caterpillar**

**Model**

**815F II**

**Year**

**2007**

**Hours**

**18,079**

**Stock ID**

**CE2127**

- EROPS
- A/C Cabin
- Straight Blade with Tilt
- Reverse Camera
- Lockable Battery Isolator
- Jump Start Receptacle
- 2 x E-Stops
- Plug & Play for Trimble GCS

- GPS System
- GME UHF Radio
- AM/FM Radio
- LED Flashing Light
- Service History Available
- **Engine, T/Convertor & Transmission Rebuild in Progress**

- Serviced & Workshop Checked
- **Located in Orange NSW**

**CE** COLEMAN'S  
EQUIPMENT



# Excavators

+61 (02) 6362 1101

| [coequip.com.au](http://coequip.com.au)

| [sales@cequip.com.au](mailto:sales@cequip.com.au)

## Kobelco SK85MSR-7

Excavator

Make

Kobelco

Model

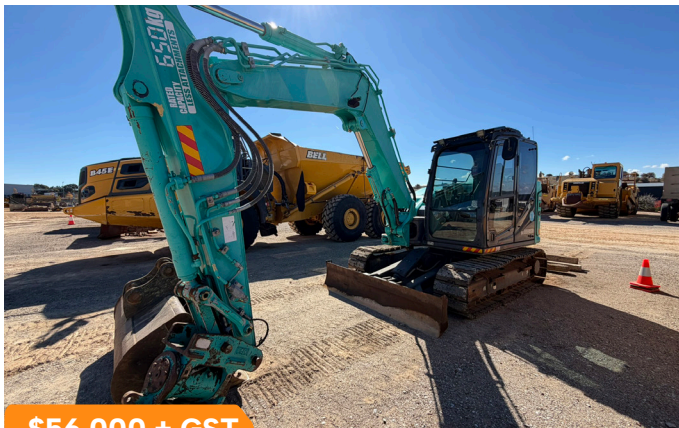
SK85MSR-7

Year

2021

Hours

7,288



\$56,000 + GST

- Stock ID: CE2213
- EROPS/FOPS
- A/C Cabin
- Tilting Quick Hitch
- 450mm GP Bucket
- 550mm GP Bucket
- 1500mm Mud Bucket
- 300mm Trench Bucket
- Reverse Camera
- Battery Isolator
- E-Stops
- GME UHF Radio
- AM/FM Radio
- LED Flashing Light
- **Located in Orange NSW**

## Caterpillar 315FLCR

Excavator

Make

Caterpillar

Model

315 FLCR

Year

2017

Hours

7,470



POA

- Stock ID: CE2204
- EROPS
- A/C Cabin
- Blade
- Tilting Hitch
- Reverse Camera
- 2 x E-Stops
- Battery & Starter Isolator
- Wired for Trimble GCS 3D GPS System
- GME UHF Radio
- CAT AM/FM Radio
- LED Flashing Light
- Handrails
- Workshop Checked & Serviced
- **Located in Orange, NSW**

## Volvo EC250DL

Excavator

Make

Volvo

Model

EC250DL

Year

2016

Hours

14,240



\$58,000 + GST

- Stock ID: CE2199
- EROPS/FOPS
- A/C Cabin
- AUX Piping
- Quick Hitch
- 1400mm GP Bucket
- 2000mm Mud Bucket
- Auto Greaser
- Handrails
- Reverse Camera
- 3 x E-Stops
- UHF Radio
- AM/FM Radio
- LED Flashing Light
- **Located in Orange, NSW**

# Caterpillar 330DL

Excavator

Make  
**Caterpillar**

Model  
**330DL**

Year  
**2006**

Hours  
**10,163**



**\$125,900 + GST**

- Stock ID: CE2143
- EROPS/FOPS
- A/C Cabin
- AUX Piping
- Quick Hitch
- Mud Bucket (2000mm)
- GP Bucket (1500mm)
- **Crusher / Screen Bucket (ALLU DH-4-17)**
- Ripper Tyne
- Reverse Camera
- Battery Isolator
- 3 x E-Stops
- GME UHF Radio
- AM/FM Radio
- LED Flashing Light
- Workshop Checked & Serviced
- **Located in Orange, NSW**



# Caterpillar 349

Excavator

Make  
**Caterpillar**

Model  
**349**

Year  
**2022**

Hours  
**5,083**



**ON RENT**

- Stock ID: CE2115
- EROPS/FOPS
- A/C Cabin
- Quick Coupler
- GP Bucket (1500mm)
- Tilting Mud Bucket (2400mm) Available as an extra
- Auto Greaser
- Reverse Camera
- 2 x E-Stops
- Battery Isolator
- Can be wired for Trimble
- 3D GPS System
- Full Trimble GPS Available as an extra
- GME UHF Radio
- CAT AM/FM Radio
- LED Flashing Light
- Platform
- Front Window Protection
- Workshop Checked & Serviced
- **Located in Orange, NSW**

**CE** COLEMAN'S  
EQUIPMENT



# Loaders

+61 (02) 6362 1101

| [cequip.com.au](http://cequip.com.au)

| [sales@cequip.com.au](mailto:sales@cequip.com.au)

## Komatsu WA250PZ-6

Wheel Loader

Make

Komatsu

Model

WA250PZ-6

Year

2022

Hours

3,264



- Stock ID: CE2106
- EROPS
- A/C Cabin
- Hydraulic Coupler
- GP Bucket (2500mm)
- Forks Available (as an extra)
- Jib Available (as an extra)
- Auto Greaser
- Reverse Camera
- Ride Control
- Autoshift
- Jump Start Receptacle
- 3 x E-Stops
- Dual Pole Battery Isolator
- Single Pole Starter Isolator
- GME UHF Radio
- AM/FM Radio
- LED Flashing Light
- 20.5R25 Radial Tyres
- Workshop Checked & Serviced
- **Located in Orange, NSW**

## Caterpillar 938K

Wheel Loader

Make

Caterpillar

Model

938K

Year

2021

Hours

3,093



- Stock ID: CE2046
- EROPS
- A/C Cabin
- Fusion Coupler
- CAT GP Bucket
- Forks Available (as an extra)
- Jib Available (as an extra)
- Auto Greaser
- Reverse Camera
- Loadrite Scales
- 2 x E-Stops
- Battery & Starter Isolators
- Jump Start Receptacle
- CAT AM/FM Radio
- GME UHF Radio
- Excellent 20.5R25 Radial Tyres
- Wheel Chocks
- LED Flashing Light
- Workshop Checked and Serviced
- **Located in Orange, NSW**

## Caterpillar 950M

Wheel Loader

Make

Caterpillar

Model

950M

Year

2015

Hours

14,000



- Stock ID: CE2196
- EROPS
- A/C Cabin
- 4 in 1 Bucket
- Reverse Camera
- GME UHF Radio
- AM/FM Radio
- LED Flashing Light
- Workshop Checked and Serviced
- **Located in Orange, NSW**

## Volvo L90H

Wheel Loader

Make

Volvo

Model

L90H

Year

2023

Hours

2,486



POA

- Stock ID: CE2181
- EROPS
- A/C Cabin
- Quick Coupler
- Third Valve
- L5 Tyres
- FM/AM Radio
- UHF Radio
- LED Flashing Light
- Will be Workshop Checked and PM Serviced
- **Located in Orange, NSW**

## Komatsu WA500-8

Wheel Loader

Make

Komatsu

Model

WA500-8

Year

2021

Hours

6,530



\$369,000 + GST

- Stock ID: CE2158
- EROPS
- A/C Cabin
- Komatsu GP Bucket (3400mm)
- Auto Greaser
- Reverse Camera
- Lockable Battery & Starter Isolators
- Jump Start Receptacle
- 3 x E-Stops
- Fast Fill for Fuel
- Chubb Fire Suppression System
- Evac Point
- Loadrite Scales (L2180) & Prin\_\_ter (LP950)
- GME UHF Radio
- AM/FM Radio
- 29.5R25 Radial Tyres
- Service History Available
- Workshop Checked & Serviced
- **Located in Orange, NSW**

## Caterpillar 963D

Track Loader

Make

Caterpillar

Model

963D

Year

2016

Hours

11,665



POA

- Stock ID: CE2195
- EROPS
- A/C Cabin
- 4 in 1 Bucket
- GME UHF Radio
- AM/FM Radio
- LED Flashing Light
- Will be Degreased & Washed
- Workshop Checked and Serviced
- Topcon 3D GPS Available as an Extra
- **Located in Orange, NSW**

**CE** COLEMAN'S  
EQUIPMENT



# Water Trucks

+61 (02) 6362 1101

| [cequip.com.au](http://cequip.com.au)

| [sales@cequip.com.au](mailto:sales@cequip.com.au)

## Caterpillar 725

Artic Water Cart

Make

Caterpillar

Model

725

Year

2021

Hours

2,550



POA

- 2 x Units Available (Unit 1: 2,550 Hours & Unit 2: 4,000)
- EROPS
- A/C Cabin
- Brand New Curry Supply Co CA5000C
- Reverse Camera
- E-Stops
- UHF Radio
- AM/FM Radio
- LED Flashing Light
- Workshop Checked & Serviced Upon Arrival
- **Located in Orange, NSW**
- Dump Body, Tailgate & Hoist Cylinders Available (as an extra)

## Caterpillar 730

Artic Water Cart

Make

Caterpillar

Model

730

Year

2022

Hours

2,026



POA

- Stock ID: CE2163
- EROPS
- A/C Cabin
- Fitted with New Curry Supply CA6000C Water Tank (22,700 Litre Capacity)
- Reverse Camera
- Auto Greaser
- Fast Fill for Fuel
- E-Stops
- Battery Isolator
- GME UHF Radio
- CAT AM/FM Radio
- LED Flashing Light
- Will be Workshop Checked & Serviced Upon Arrival
- Dump Body, Tailgate & Hoist Cylinders Available (as an extra)

## Caterpillar 730C2

Artic Water Cart

Make

Caterpillar

Model

730C2

Year

2016

Hours

8,105



From \$455,000 + GST

- Stock ID: CE2020
- EROPS
- A/C Cabin
- Reverse Camera
- Fitted with 15 Month Old Klein K-600 Water Tank with 22,700 Litre Capacity
- In Cab Control Unit to Operate: 2 x Rear Spray Heads, 2 x Front Spray Heads, Water Cannon, Water Pump
- Rear Push Bumper
- Lockable Battery Isolator
- 2 x E-Stops
- Jump Start Receptacle
- CAT AM/FM Radio
- GME UHF Radio
- LED Flashing Light
- Workshop Checked & Serviced using Genuine CAT Filters & Oils
- Service History Available
- Dump Body, Tailgate & Cylinders Available

# Volvo A30G

Artic Water Cart

Make  
**Volvo**

Model  
**A30G**

Year  
**2022**

Hours  
**3,016**



POA

- Stock ID: CE2178
- EROPS
- A/C Cabin
- Fitted with New Curry Supply CA6000V Water Tank
- Auto Grease
- Reverse Camera
- Battery Isolator
- E-Stops
- GME UHF Radio
- AM/FM Radio
- LED Flashing Light
- Workshop Checked & Serviced
- **Located in Orange, NSW**
- Tailgate, Dump Body & Cylinders Available (as an extra)

# Volvo A40G

Artic Water Cart

Make  
**Volvo**

Model  
**A40G**

Year  
**2022**

Hours  
**4,080**



POA

- Stock ID: CE2200
- EROPS
- A/C Cabin
- Fitted with New Curry Supply CA8000V Water Tank
- Reverse Camera
- Battery Isolator
- E-Stops
- GME UHF Radio
- AM/FM Radio
- LED Flashing Light
- Workshop Checked & Serviced
- **Located in Orange, NSW**
- Tailgate, Dump Body & Cylinders Available (as an extra)

# Vovlo A45G

Artic Water Cart

Make  
**Volvo**

Model  
**A45G**

Year  
**2020**

Hours  
**4,915**



POA

- Stock ID: CE2165
- EROPS
- A/C Cabin
- Fitted with New Curry Supply CA8000V Water Tank
- Reverse Camera
- Fast Fill for Fuel
- Fire Suppression System
- Battery Isolator
- E-Stops
- GME UHF Radio
- AM/FM Radio
- LED Flashing Light
- Workshop Checked & Serviced
- **Located in Orange, NSW**
- Tailgate, Dump Body & Cylinders Available (as an extra)

**CE** COLEMAN'S  
EQUIPMENT



# Dump Trucks

+61 (02) 6362 1101

| [cequip.com.au](http://cequip.com.au)

| [sales@cequip.com.au](mailto:sales@cequip.com.au)

## Volvo A25G

Volvo

A25G

2021

3,352



POA

- 2 x Units Available (Unit 1: 3,352 Hours & Unit 2: 3,407 Hours)
- EROPS
- A/C Cabin
- Standard Dump Body
- Tailgate as an Extra
- Reverse Camera
- E-Stops
- UHF Radio
- AM/FM Radio
- LED Flashing Light
- Workshop Checked & Serviced Upon Arrival
- **Located in Orange, NSW**
- Brand New Curry Supply Co CA6000V Water Tank Available (at extra cost)

## Volvo A30G

Volvo

A30G

2022

1,749



POA

- 2 x Units Available (Unit 1: 1,749 Hours & Unit 2: 3,009 Hours)
- EROPS
- A/C Cabin
- Standard Dump Body
- Tailgate
- Auto Greaser
- Reverse Camera
- E-Stops
- UHF Radio
- AM/FM Radio
- LED Flashing Light
- Workshop Checked & Serviced
- **Located in Orange, NSW**
- Brand New Curry Supply Co CA6000V Water Tank Available (at extra cost)

## Volvo A40G

Volvo

A40G

2023

1,613



POA

- 2 x Units Available (Unit 1: 1,613 Hours 2022 & Unit 2: 1,976 Hours 2023)
- EROPS
- A/C Cabin
- Standard Dump Body
- Tailgate
- Reverse Camera
- E-Stops
- GME UHF Radio
- AM/FM Radio
- LED Flashing Light
- Workshop Checked & Serviced Upon Arrival
- **Located in Orange, NSW**
- Brand New Curry Supply Co CA8000V Water Tank Available (at extra cost)

## Volvo A45G

Volvo

A45G

2020

4,915



POA

- Stock ID: CE2165
- EROPS
- A/C Cabin
- Standard Dump Body
- Tailgate
- Reverse Camera
- Fast Fill for Fuel
- Fire Suppression System
- Battery Isolator
- E-Stops
- GME UHF Radio
- AM/FM Radio
- LED Flashing Light
- Workshop Checked & Serviced
- **Located in Orange, NSW**

## Caterpillar 725

Artic Dump Trucks

Make  
**Caterpillar**

Model  
**725**

Year  
**2021**

Hours  
**2,550**



POA

- 2 x Units Available (Unit 1: 2,550 Hours & Unit 2: 4,000)
- EROPS
- A/C Cabin
- Standard Dump Body
- Tailgate as an extra
- Reverse Camera
- E-Stops
- UHF Radio
- AM/FM Radio
- LED Flashing Light
- Workshop Checked & Serviced Upon Arrival
- **Available End May**
- Brand New Curry Supply Co CA6000C (at extra cost)

## Caterpillar 730

Artic Dump Truck

Make  
**Caterpillar**

Model  
**730**

Year  
**2022**

Hours  
**2,029**



POA

- Stock ID: CE2163
- EROPS
- A/C Cabin
- Standard Dump Body
- Tailgate
- E-Stops
- Auto Greaser
- Fast Fill Fuel
- Jump Start Receptacle
- Battery & Starter Isolators
- UHF Radio
- AM/FM Radio
- LED Flashing Light
- Wheel Chocks
- Serviced & Workshop Checked
- **Located in Orange NSW**

## Bell B45E

Artic Dump Truck

Make  
**Bell**

Model  
**B45E**

Year  
**2018**

Hours  
**7,964**



\$259,000 + GST

- EROPS
- A/C Cabin
- Standard Dump Body
- Tailgate
- Battery Isolator
- Fire Suppression
- 2x E-Stops
- Reverse Camera
- GME UHF Radio
- AM/FM Radio
- Inclinometer
- LED Flashing Light
- Wheel Chocks
- 29.5R25 Tyres
- Workshop Checked & Serviced Upon Arrival
- Brand New Curry Supply Co CA9000B (at extra cost)
- **Located Orange, NSW**



# Service Trucks



FULL MINE SPEC

# Volvo A45G

## Service Truck

Make

Volvo

Model

A45G

Year

2024

Hours

150 DEMO

Stock ID

CE2149

- EROPS
- A/C Cabin
- Curry Supply Service Body just Installed
- Reverse Camera
- Battery & Starter Isolators
- Jump Start Receptacles
- E-Stops
- Chubb Fire Suppression
- UHF Radio
- AM/FM Radio
- LED Flashing Light

- Wheel Chocks
- Available for Inspection Upon Request – Warranty Available
- **Located in Orange, NSW**

#### Fuel & Lube Compartments:

- 1 x Diesel – 13,500 Litres (main compartment), with Hydraulic Pump
- 1 x Hydraulic Oil – 1,200 Litres
- 1 x Transmission Oil – 825 Litres
- 1 x Engine Oil – 825 Litres

- 1 x Final Drive Oil – 825 Litres
- 1 x Gear Oil – 825 Litres
- 2 x Stainless Steel Tanks (for Water, Coolant or AdBlue) – 375 Litres
- 1 x Oil Evac Paired with Waste Compartment – 1,500 Litres
- 1 x Bulk Grease System with Graco Pump – 205 Litres
- **From \$1,655,000 + GST**



**POA**

# Volvo A45G

## Service Truck

**Make**

**Volvo**

**Model**

**A45G**

**Year**

**2020**

**Hours**

**4,915**

**Stock ID**

**CE2165**

- EROPS
- A/C Cabin
- Curry Supply Service Body just Installed – Spec Below
- Fast Fill for Fuel
- Fire Suppression System
- Reverse Camera
- Battery Isolator
- E-Stops
- GME UHF Radio

- AM/FM Radio
- LED Flashing Light
- Workshop Checked & Serviced
- **Located in Orange, NSW**

**Fuel & Lube Compartments:**

- 1 x Diesel – 13,500 Litres (main compartment), with Hydraulic Pump
- 1 x Hydraulic Oil – 1,200 Litres

- 1 x Transmission Oil – 825 Litres
- 1 x Engine Oil – 825 Litres
- 1 x Final Drive Oil – 825 Litres
- 1 x Gear Oil – 825 Litres
- 2 x Stainless Steel Tanks (for Water, Coolant or AdBlue) – 375 Litres
- 1 x Oil Evac Paired with Waste Compartment – 1,500 Litres



## POA



### Fitting:

Volvo & Caterpillar  
Articulated Trucks



### Capacity:

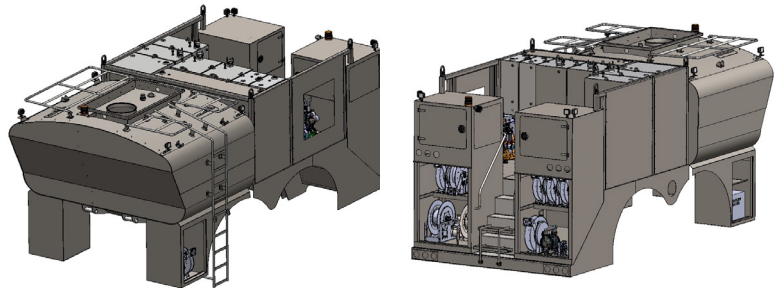
Fuel Compartment from  
13,500 Litres



### Custom Built:

Exclusive to Coleman's  
Equipment

## Curry Supply Co. Service Body



Coleman's Equipment Service Bodies are exclusively built by Curry Supply Co. for our customers, enabling flexibility in each build, with specifications based on Site & Fleet Requirements. Example Service Body Specs:

### Fuel & Lube Compartments

- 1 x Diesel – 13,500 Litres (main compartment), with Hydraulic Pump
- 1 x Hydraulic Oil – 1,200 Litres
- 1 x Transmission Oil – 825 Litres
- 1 x Engine Oil – 825 Litres
- 1 x Final Drive Oil – 825 Litres
- 1 x Gear Oil – 825 Litres
- 2 x Stainless Steel Tanks (for Water, Coolant or AdBlue) – 375 Litres
- 1 x Oil Evac Paired with Waste Compartment – 1,500 Litres
- 1 x Bulk Grease System with Graco Pump – 205 Litres

### Service Centre Features

- On Board Engine: Hatz 3H50TIC Diesel Engine (Silent Pack II), with
- Remote Start, LED Display, Controls & Emergency Stop
- On Board Air: Atlas Copco 30CFM Compressor with Tank, Hannay
- Spring Rewind Air Hose Reel (15 Metres)

### Bulk Fuel System Features

- Blackmer 2 1/2" High Volume Hydraulic Pump
- Hannay Electric Rewind Reel (15 Metres, 1 1/2" Hose),
- Wiggins Fast Fill for Fuel with Filter System
- Emergency Shut Off
- More Details Available upon Request

### Inclusions

- 5 x Hannay Spring Rewind Hoses for Product Delivery
- Graco Diaphragm Pumps Throughout
- Rear Access Way for Safety
- Roll Up Doors on Rear & Side Service Centre Compartments
- Interior Lighting & Heating in Service Compartments
- Hi-Output Work Lights & Safety Lights
- Fire Extinguishers
- Operations, Parts & Instruction Manuals & Decals
- Centre of Gravity Report
- Finished in Volvo or CAT Yellow



# Tanks



## POA



### Fitting:

Volvo A40 / A45 Articulated Trucks



### Capacity:

30,280 Litres (8,000 US Gallons)



### Custom Built:

High Standard ASTM-A 1/4" - 1.2" Steel

# Curry Supply Co. CA8000V Water Tank

## After Sales Service & Spare Parts

Coleman's Equipment has had a long relationship with Curry Supply Co and has assisted in the development of the water tanks for the Australian, New Zealand & South Pacific Markets. With over 100 water tanks currently in operation across all regions.

This experience combined with a deep understanding of the Heavy Equipment Market makes us one of the leading Articulated & Rigid Off-Road Water Tank Suppliers.

The Coleman's Equipment Parts Team can assist with a full range of In Stock Curry Supply Co Parts, whether it be consumable items such as Spray Head Diaphragms, O-Rings and Gaskets through to Damage Items, such as Canon's, Water Pumps & Hose Reels.

## Optional Extra's

Coleman's Equipment has a large workshop facility in both Orange & Wollongong, NSW, which enables a wide range of specifications to be completed on all of our equipment, including:

- Full MDG15 Mine Specification to Trucks, Tanks and Other Available Equipment
- Water Level Monitor's, Displays, & Auto Shut Off
- Worklights & Other Electrical Works
- Fast Fill for Fuel
- Evac Systems for Transmission, Engine & Hydraulic Compartments, and
- Much, Much More.

## Tank Specifications

- 100% Australian/US Built for Australian Conditions
- Constructed of High Standard ASTM-A 1/4" - 1.2" Steel,
- Interior Protective Coating for optimum protection,
- Extensive Tank Baffling - creating stability without losing capacity,
- Under body Stone Chip Protection Coating,
- Low Profile/Low Centre of Gravity,
- Berkeley Style 4 X 3 Hydraulic Water Pump.
- Bulkhead Mounted Ladder,
- In Cab Operators Instruction Decals,
- Manual Rewind Hose Reel,
- Operations & Parts Manual,
- Centre of Gravity Report.

## In Cab Control Unit

- Pump - On/Off
- 3 x Rear Sprays
- 2 x Top Mounted Batter Sprays
- Elkhart Brass Nitro Water Canon including Spray Pattern
- VFD Gravity Drop At Rear of Tank



**Call for Price**

# Brand New Curry Supply Co. Water Tanks

## **Coleman's Equipment can Supply and Fit Curry Supply Co Tanks to the Following Models:**

- Caterpillar 725/C, 730/C, 740/B, 745/C Articulated Dump Trucks
- Volvo A25/E/F, A30/E/F/G and A40/E/F/G Articulated Dump Trucks
- Caterpillar 769, 773/G, 777 D/E/F Model Rigid Trucks

## **Coleman's Equipment can also Supply Curry Supply Co. Tanks Available to Fit the Following Models Upon Request:**

- Komatsu HM300 and HM400 Articulated Dump Trucks
- John Deere 460 Articulated Dump Trucks
- Hydrema 912 Articulated Dump Trucks

## **General Curry Supply Co. Tank Model Features:**

- Capacities from 9,460 Litres to 75,700 Litres (2,500 US Gallons to 20,000 US Gallons)
- Low Profile / Low Centre of Gravity
- Front Bulkhead Mounted ladder
- Spray System Control Panel for Installation in Cabin
- 4 x 3 Hydraulic Water Pump
- 2, 3 or 4 x Rear Mounted and 2 x Side Mounted Cabin Controlled Sprays

- Cabin Controlled Elkhart Water Spray Cannon
- Manual Rewind Hose
- VFD Gravity Drop at Rear

## **Optional Extra's that can be Fitted to Tanks on Request:**

- Full MDG15 Mine Specification to Truck & Tank
- Water Level Monitor, Display & Auto Cut-Off
- Fast Fill Fuel, Evac to Transmission, Engine & Hydraulic Compartments, and
- Much much more.





# Attachments

# Caterpillar D8T/R/N

Multi Shank Ripper



\$38,500 + GST

Make

Bedrock

Stock ID

ME0579

Year

2025

- Suited to Caterpillar D8T, D8R & D8N Bulldozers
- Brand New
- 4 x Barrell MSR Ripper
- 3 x Tynes
- Heavy Duty Ripper Assembly
- **Located in Orange, NSW**

# Gessner

Tree Spear



\$11,000 + GST

Make

Gessner

Stock ID

ME0751

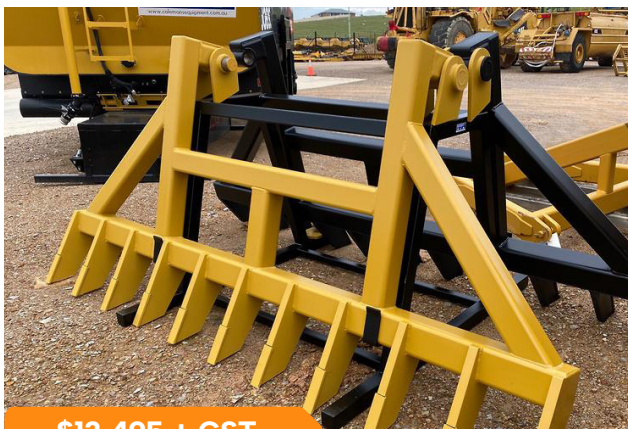
Year

2025

- Suits Dozers with SU/ Sigma Blade, including CAT & Komatsu Dozers
- Fixed 4 Point Blade Mounting (Blade Mounts not Included)
- Blade Mounted allows for the Spear to stay on the blade with a Stick Rake if required
- **Located in Orange, NSW**

# Caterpillar D6K/N

Stick and Root Rake



\$13,495 + GST

Stock ID

ME0661

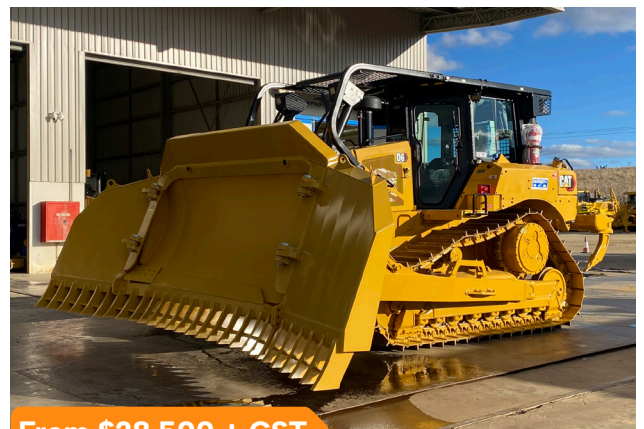
Year

2025

- Australian Made
- 3,430mm Wide
- 1,640mm High
- 40mm Wide and 510mm Long Tynes
- Main Frame Tube
- 130mm
- Can be fitted to any small Dozer
- Made for CAT, Komatsu and Case etc. Located in Orange, NSW

# Caterpillar D6/D7/D8

Folding Stick Rakes



From \$28,500 + GST

Make

Bedrock

Stock ID

ME0732

Year

2025

- Brand New
- Suits CAT D6R/T, D7R & D8R/T Dozers with SU Blade
- D6R/T – 20 Foot (6.1 Meters)
- D7R – 22 Foot (6.9 Meters)
- D8R/T – 24 Foot (7.4 Meters)

## Caterpillar Fusion

Quick Coupler Hitch



\$12,500 + GST

Make

Caterpillar

Stock ID

ME0767

Year

2015

- 1x Near New CAT Fusion Quick Coupler Hitch Complete
- Genuine P/N: 333-6550
- Removed from CAT 924K Wheel Loader Due to Customer Requirement
- Suits CAT 924, 930 & 938 Wheel Loaders
- **Located in Orange, NSW**

## Caterpillar 924 - 938

Fusion Bucket



\$7,800 + GST

Make

Caterpillar

Stock ID

ME0754

Year

2015

- Suits: CAT 924H, 938K, 938M, 926, 924K, 926M, 938, 930K, 924, 930M, 930 Models
- Removed from Low Hour CAT 924K Loader due to Customer Requirement
- Fusion Coupler
- 2550mm
- 2.13m<sup>3</sup> Capacity
- New Base Edge
- New Cutting Edges
- CAT P/N: 360-3320

## Caterpillar D6K2

Forward Sweeps and Screens



\$8,500 + GST

Make

Caterpillar

Stock ID

ME0263

Year

2014

- Suits Caterpillar D6K Bulldozers
- Genuine CAT Forward Sweeps
- Includes Forward Sweeps, Top Guard & Rear Screen.
- In Excellent Condition

## Caterpillar D6

Rear Screen



\$2,950 + GST

Make

Caterpillar

Stock ID

ME0684

Year

N/A

- Like New Condition
- Screen Only
- Suits CAT D6 Dozers
- **Located in Orange, NSW**
- CAT Part No: 451-4758

# Caterpillar

## Dump Bodies in Stock



From \$5,000 + GST

Make

Caterpillar

Location

Orange, NSW

- 1 x CAT 725C2 Dump Body (ME0607) \$5,000 + GST
- 1 x CAT 730 Dump Body (ME0739) \$6,000 + GST
- 1 x CAT 730 Dump Body (ME0760) \$POA
- 1 x CAT 730 Dump Body (ME0762) \$POA
- 1 x CAT 745 Dump Body (ME0735) \$6,000 + GST
- 1 x CAT 745 Dump Body (ME0753) \$6,000 + GST
- **Located in Orange, NSW**

# Caterpillar

## Tailgates in Stock



From \$5,000 + GST

Make

Caterpillar & Volvo

Location

Orange, NSW

- 2 x New CAT 725C Tailgates: \$10,000 + GST Each (ME0275/ME0569)
- 1 x Used CAT 725C2 Tailgates: \$5,000 + GST Each (ME0692)
- 2 x CAT 730 Next Gen Tailgates: \$POA (ME0761/ME0763)
- 1 x New CAT 730C Tailgate: \$10,000 + GST (ME0619)
- 1 x Used CAT 740 GC Tailgate: \$8,500 + GST (ME0676)
- **Located in Orange, NSW**

# Volvo

## Dump Bodies in Stock



From \$5,000 + GST

Make

Caterpillar

Location

Orange, NSW

- 1 x Volvo A40G Dump Body (ME0766) \$6,000 + GST
- 1 x Volvo A45G Dump Body (ME0768) \$6,000 + GST
- **Located in Orange, NSW**

# Volvo

## Tailgates in Stock



From \$5,000 + GST

Make

Caterpillar & Volvo

Location

Orange, NSW

- 1 x New Volvo A40G Tailgate: \$14,500 + GST (ME0646)
- 1 x Used Volvo A45G Tailgate: \$6,000 + GST (ME0770) in Stock
- **Located in Orange, NSW**

## Tyres In Stock



From \$1,000 + GST

### Location

Orange, NSW

- 4 x NEW Bridgestone 17.5R25 – \$6,950 + GST – Package of 4 (ME0454)
- 1 x USED Bridgestone 23.5R25 – had Tyre repair – \$1,000 + GST each (ME0624)
- 1 x USED Bridgestone 30/65R25 V Steel Tyre – \$1,000 + GST (ME0748)
- 2 x USED Bridgestone 29.5R25 V Steel Tyres – \$POA (ME0747)
- 1 x USED Michelin XTLA 17.5R25 Tyre – \$1,000 + GST (ME0752)
- 1 x USED Galaxy 29.5R25 Tyre – \$1,200 + GST (ME0769)

## Tyres & Rims



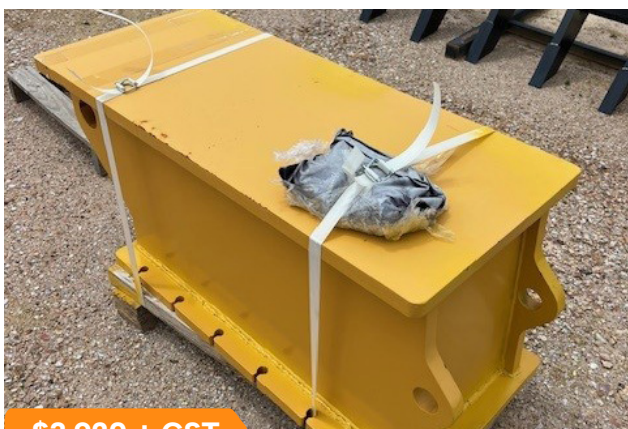
From \$1,350 + GST

### Location

Orange, NSW

- 3 x USED Maxam 17.5-25 Tyre and Rim – \$1,890 + GST each (ME0633)
- 2 x USED Michelin 14.00R24 Tyre and Rim – \$1,350 + GST each (ME0594)
- 1 x NEW Maxam 14.00R24 Tyre and Rim – \$3,950 + GST each (ME0548)
- 1 x NEW Maxam 23.5R25 Tyre and Rim – \$7,500 + GST (ME0697)

## John Deere Grader Push Block



\$3,920 + GST

### Make

John Deere

### Stock ID

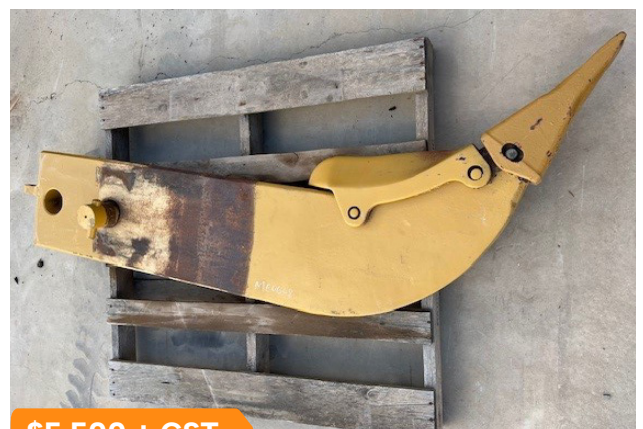
ME0683

### Year

2024

- New/Unused
- Suits: John Deere 670G, 672G, 770G & 772G Graders
- **Located in Orange, NSW**

## Caterpillar D8 Ripper Shank



\$5,500 + GST

### Make

Caterpillar

### Stock ID

ME0648

### Year

N/A

- Suits CAT D8 Rippers
- 1 x Shank in Stock
- 1850mm with G.E.T
- 85mm Hole
- **Located in Orange, NSW**

## Caterpillar 16ft Blade & Side-Shift Cylinder



Blade \$25,000 + GST

Make

Caterpillar

Stock ID

ME0723

Year

2023

- Genuine CAT Blade & Cylinder
- Removed from near new 2023 CAT 14 Grader due to customer requirement
- Side Shift Cylinder (Part No: 605-4481) – \$8,500 + GST
- Blade – \$25,000 + GST
- Cylinders Suited to: CAT 14, 16 & 18 Graders
- Blade Suited to: CAT 14M & 14 Next Gen Graders
- **Located in Orange, NSW**

## Caterpillar Hoist / Lift Cylinders



\$3,950 + GST Each

Make

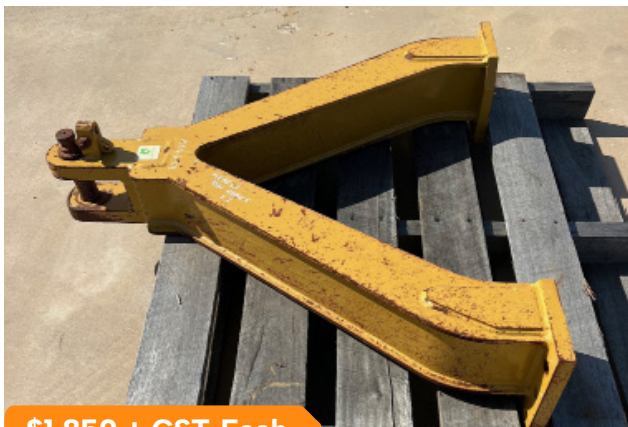
Caterpillar & Volvo

Location

Orange, NSW

- 10 x CAT 725/725C/725C2 Cylinders (Part No: 285-4031 / 2854031)
- 10 x CAT 730/730C/730C2 Cylinders (Part No: 285-4032 / 2854032)
- 2 x Volvo A40G Cylinders
- 2 x Volvo A45G Cylinders
- **Located in Orange, NSW**

## Caterpillar D6 Draw Bars



\$1,850 + GST Each

Make

Caterpillar

Stock ID

ME0650

Year

2023

- 3 x Draw Bars Available (Part No: 3W-6867)
- ME0650 – Removed from 2022 D6 LGP Dozer (Part No: 3W-6867)
- ME0653 – Removed from 2018 D6T XL Dozer
- ME0724 – Removed from Brand New 2023 D6 LGP Dozer
- Genuine CAT
- Great Condition

## 10-12 Tonne Excavator ABS Tilting Mud Bucket



\$5,950 + GST

Make

Caterpillar

Stock ID

ME0515

Year

2016

- 1500mm Wide
- 50mm Pins
- 310mm Centers
- 200mm between Ears
- Suits 10 – 12 Tonne Excavators
- Good Condition
- **Located in Orange, NSW**

# Komatsu PC350LC-8

## Mud Bucket



\$4,950 + GST

Make

Komatsu

Stock ID

ME0742

Year

2016

- Used Genuine Komatsu Bucket
- Removed from 2016 Komatsu PC350LC-8 Excavator
- 2100mm
- 90mm Pins
- 510mm Centres
- 350mm Between Ears
- **Located in Orange, NSW**



\$18,500 + GST

Make

Hitachi

Stock ID

ME0703

Year

2020

- Great Condition
- 675mm between Centres
- Pin Diameters: 140mm (Top) 130mm (Bottom)
- Pin Width: 560mm
- **Located in Orange, NSW**

# Gessner Lewis

## Multi Shank Ripper



POA

Make

Gessner

Stock ID

ME0772

Year

2025

- CAT D6 Gessner Lewis Multi Shank Ripper
- Brand New
- Suits Caterpillar D6H, D6R, D6T, D6 Next Gen
- 2 Barrel MS Ripper with 3 x Tynes
- **Located in Orange, NSW**

# Gessner Lewis

## Cutter Bar



POA

Make

Gessner

Stock ID

ME0771

Year

2025

- New CAT D6 Gessner Cutter Bar
- Brand New
- Suits Caterpillar D6, D6R/T Dozers with Single Tyne Rippers
- V-Wing
- Gessner P/N: 0174-055-TH
- **Located in Orange, NSW**

**CE** COLEMAN'S  
EQUIPMENT



**CE** COLEMAN'S  
EQUIPMENT



31 Colliers Ave, Orange NSW 2800

Monday to Friday - 8:00am to 5:30pm

Saturday - By Appointment Only

Sunday - Closed

Stock contained in this brochure are subject to availability. Coleman's Equipment uses best efforts to keep the brochure up to date, however in some circumstances the Stock may have sold. prior to update being completed. Please call to get the latest information.

+61 (02) 6362 1101

| [cequip.com.au](http://cequip.com.au)

| [sales@cequip.com.au](mailto:sales@cequip.com.au)